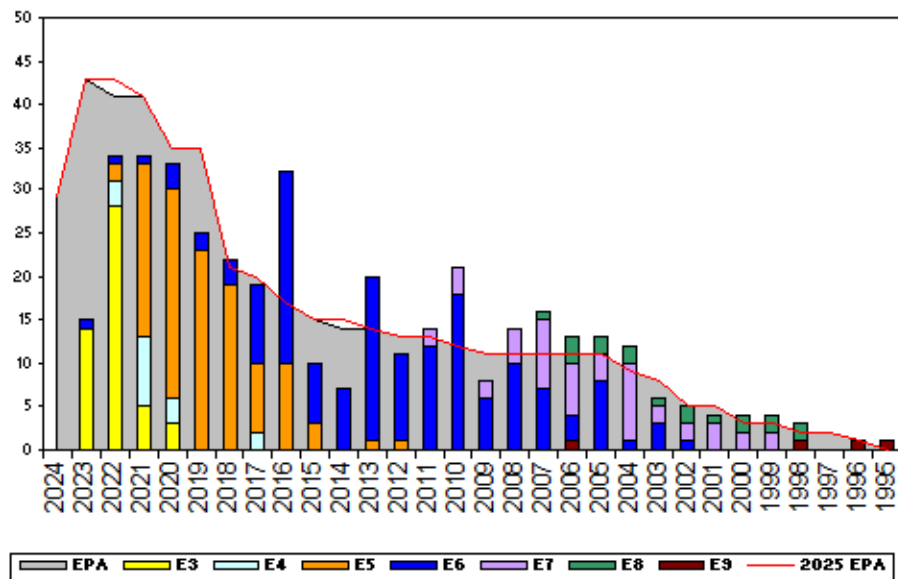


Naval Aircrewman (Mechanical), TAR - J154

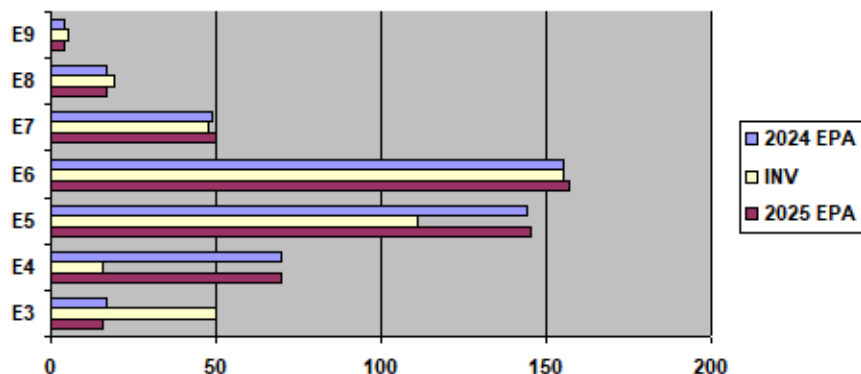


TOUR	Sea Shore Rotation		FS MANNING		ADV OPP.		
	SEA	SHORE	PG	SEA	SHORE	AWFTAR	All-Navy
E1-3	48	42	E1-3	0.00%	0.00%	TIR	TIR
E4	48	42	E4	21.74%	0.00%	0.00%	58.8%
E5	48	42	E5	82.64%	43.75%	75.00%	47.0%
E6	48	42	E6	102.42%	96.30%	6.58%	15.0%
E7	48	36	E7	100.00%	91.67%	15.25%	24.3%
E8	48	36	E8	91.67%	150.00%	19.05%	5.3%
E9	42	36	E9	0.00%	125.00%	16.67%	20.0%

Zone Information

	ZONE A	ZONE B	ZONE C	ZONE D	ZONE E	ALL ZONES
FY24 Manning:	71%	90%	126%	115%	89%	89%
FYTD RE Rate:	37.50%	66.67%	100.00%	100.00%	57.14%	65.91%
FY25 Manning:	70%	90%	124%	115%	89%	88%

EPA by Paygrade vs Inventory



	E1-3	E4	E5	E6	E7	E8	E9	TOTAL
% INV to FY24 EPA	294%	23%	77%	100%	98%	112%	125%	89%
EPA (FY24)	17	70	144	155	49	17	4	456
INVENTORY	50	16	111	155	48	19	5	404
EPA (FY25)	16	70	145	157	50	17	4	459
% INV to FY25 EPA	313%	23%	77%	99%	96%	112%	125%	88%

NOTES

***** UNDERMANNED RATING *****

Current manning is 89% of FY24 Enlisted Programmed Authorizations.

-ASVAB and age waivers will be considered on a case by case basis.

-All Aircrew Packages shall be IAW MILPERSMAN 1220-010 and submitted to TAR AWF (Enlisted Community Manager).

-Accepting RC2TAR Applications for E4-E5.

-Members that non-volunteer from flying duty shall be force converted per MILPERSMAN 1440-011.

For any questions regarding community health, contact your ECM at robert.e.derbyshire.mil@us.navy.mil.